

GRATIS

*The*

# HONITON

*Flyer*

AUTUMN 2022

**THE FREE AREA GUIDE ABOUT HONITON FOR HONITON**  
PRODUCED QUARTERLY: AUTUMN • WINTER • SPRING • SUMMER

LOCAL NEWS & PHOTOS  
REGULAR CONTRIBUTORS  
LOCAL BUSINESSES &  
SERVICE PROVIDERS  
LOCAL TOWN &  
AREA MAPS

for more information visit us at [www.thehonitonflyer.co.uk](http://www.thehonitonflyer.co.uk)

#ShopLocal



**BUY LOCAL**

#BuyBritish

**PLEASE SUPPORT YOUR  
LOCAL BUSINESSES**

# WOW!

THE  
PERFECT  
CHRISTMAS  
GIFT

# THE ULTIMATE AEROBATIC EXPERIENCE

FROM JUST £99

Choose from our 15, 30 or 60-minute flight experience gift voucher packages.



Experience the feeling of pulling up to 6G as you complete manoeuvres including; stall turns, loops, rolls and chandelles as your guests watch from below. All flights are from Dunkeswell Aerodrome near Honiton.

Call or visit our website to book a memory of a lifetime!

07850 969915 [www.sw-aerobatics.co.uk](http://www.sw-aerobatics.co.uk)



As we go to press for the autumn 2022 edition of **The Honiton Flyer**, there are mixed emotions on the streets. We marvel at the 70 year reign of Her Majesty.

We marvel at the resolution of Her Majesty's subjects who have queued for up to 24 hours in order to see her coffin, as her body lies in state in Westminster Hall. Locally we invest in commemorative bouquets to lay at our churches, memorials and other significant symbols, representing our spiritual homage to Her passing. What a marvellous legacy to our late Queen Elizabeth II. May we learn from her example and resolve.

I am hearing a number of dissenters – those who miss national sport, and resent the financial losses they are suffering as a result of the period of mourning, culminating in an additional Bank Holiday Monday. Whilst he now have suffered no financial loss, David Beckham has been one of many for us to admire during this time of respect and reflection. This has again been a time for us all to come together and show respect to our now deceased Monarch.

### God Save The King!

Back to reality! In this edition we have Honiton Lions revealing the success of their "Mole Screening", on **Page 12**. And our regular contributor Terry Darranr gives a wonderful review of sovereigns past and present on **Pages 16 & 17**.

**Page 20** features three more "Honiton Women at Work", and **Pages 24 & 25** reveal our latest walk. This time around Cadhay and Escot.

Our new contributors "Friends of Honiton Station" tell us about their involvement in the continued success of our local railway station on **Pages 30 & 31**.

As always, we welcome your comments and contributions for inclusion in future editions of **The Honiton Flyer**. Please contact me by email.

Best wishes,

*Anthony Bucke*

Sunday 18 September 2022



Ronnie Watt  
Austin 8cwt pickup 1972.



Brass lectern at  
Church of St Pauls, Honiton.

PLEASE LIKE US AND FOLLOW US  
@TheHonitonFlyer

**Disclaimer:** The Honiton Flyer is published by The Flyer Publications Ltd, The Old Textile Mill, South Street, Crewkerne, TA18 8AG. Whilst every effort is made to ensure accuracy, no liability is accepted by the publishers for inaccuracies or omissions in the content of the Honiton Flyer. This publication is distributed free of charge in the EX14 postcode. If you would like your own free copy, please contact the publishers at the above address. No content of the publication may be reproduced without the written consent of the publishers.

**Copyright:** The Honiton Flyer 2022.

# INDEX AUTUMN 2022

4 You From Me Ltd.....	Page 14	Homeinstead.....	Page 31
Antiques Bazaar.....	Page 33	Homefire.....	Page 6
Atkins Auctions.....	Page 21	Honiton Tile & Bathroom.....	Page 10
Access Electric Bikes.....	Page 15	Howdens.....	Page 8
Axminster Garden Machinery.....	Page 5	Kode Print & Designs.....	Page 22
Belly Dance Heaven.....	Page 6	Lyme Bay Winery.....	Page 8
Bespoke Landscapes.....	Page 6	MST Auctioneers.....	Page 29
Blackbury Honey Farm.....	Page 11	Nana's Attic.....	Page 9
Bluebird Care.....	Page 36	N.J.T. Plumbing & Heating.....	Page 11
C Plant Services.....	Page 13	Ottery Office & Computers Ltd.....	Page 22
Coastline Mobility.....	Page 28	Oliver Joseph Fitness.....	Page 26,27
Colourfence.....	Page 7	South West Aerobatics.....	Page 2
Culm Valley Pet Cremations.....	Page 35	Taylor Sweeps.....	Page 22
Curt Willis Motors.....	Page 29	The Chippee !.....	Page 5
Daisy's Dairy.....	Page 9	The Coastal Boutique.....	Page 11
Devon Permanent Makeup.....	Page 8	The Honiton Eye Clinic.....	Page 15
EGF Carpets & Vinyls.....	Page 9	The Honiton Pottery Workshop.....	Page 13
Fig & Ivy.....	Page 13	Total Plumbing Supplies Ltd.....	Page 23
First Light Home Improvements.....	Page 9	The Vintage Trading Post.....	Page 5

## A.G.M.

Axminster Garden Machinery

SALES • SERVICE • SPARES  
Independent Specialists

FACTORY APPOINTED AUTHORISED DEALERS  
OF ALL POWER EQUIPMENT WE SELL  
**Quality, Value and Service**  
....Small enough to care, ....Big enough to cope

**MAIN AGENTS AND DEALERS FOR**





















Proper Horticultural Engineering since 1979



Always  
Great Deals  
Available

Unit 1A Weycroft Avenue, Millway Rise, Axminster, EX13 5HU  
Tel: 01297 631186  
[www.axminstergardenmachinery.co.uk](http://www.axminstergardenmachinery.co.uk)

# Chippee!

FINE FISH AND CHIPS.

We serve quality Fish and Chips  
on Honiton High Street.  
Our food is honest, simply prepared,  
and fried fresh in front of you  
from 5pm every evening  
and 12-2pm on Friday & Saturday.

You can also pre-order your food on our website




**Chippee.co.uk**  
156-158 High Street, Honiton, EX14 1JX

## ADVERTISE WITH



QUARTERLY TOWN GUIDE FOR  
CHARD & THE TA20 POSTCODE  
[www.thechardflyer.co.uk](http://www.thechardflyer.co.uk)



QUARTERLY TOWN GUIDE FOR  
CREWKERNE & THE HAMSTONE VILLAGES  
[www.thecrewkerneflyer.co.uk](http://www.thecrewkerneflyer.co.uk)



QUARTERLY TOWN GUIDE FOR  
BRIDPORT & THE DT6 POSTCODE  
[www.thebridportflyer.co.uk](http://www.thebridportflyer.co.uk)



Covering Honiton, Offwell, Collfeigh, Yacombe,  
Dunkeswell, Awilscombe and Fasilton.  
[www.thehonitonflyer.co.uk](http://www.thehonitonflyer.co.uk)



ANDY MUNCKTON FIELD SALES MANAGER  
07823 346 666 [theflyerpublications@gmail.com](mailto:theflyerpublications@gmail.com)  
**WE WANT YOUR BUSINESS TO SUCCEED!**

Like & Follow us @TheVintageTradingPost   

[WWW.THEVINTAGETRADINGPOST.CO.UK](http://WWW.THEVINTAGETRADINGPOST.CO.UK)



VINTAGE TRADING POST

OTTERY: 01404 811224      AXMINSTER: 01460 221330

**WE SELL A HUGE VARIETY OF DECORATIVE & FUNCTIONAL ITEMS INCLUDING:**  
 VINTAGE ★ RETRO ★ INDUSTRIAL ★ BROCANTE ★ ANTIQUE ★ RECLAMATION  
 TOOLS ★ VINYL ★ FURNITURE ★ JEWELLERY ★ CLOTHING ★ MILITARIA  
 ART ★ KITCHENALIA ★ BRIC A BRAC ★ SALVAGE ★ LIGHTING

**OPEN 7 DAYS A WEEK ★ SEE YOU THERE! ★**

**AXMINSTER: CHARD ROAD, TYTHERLEIGH, AXMINSTER, DEVON EX13 7BE**  
**OTTERY: FINNIMORE TRADING ESTATE, OTTERY ST MARY EX11 1NR**



Want to learn something new? Increase your body confidence, stamina and core strength? Then belly dance may be for you!

**DROP IN CLASSES ONLY £6**  
**BEGINNERS WELCOME – NO PRE-BOOKING REQUIRED – COIN BELTS PROVIDED**

- **1610, JARMAN WAY, CHARD**  
- Monday: 10.30am
- **KELLY LEIGH DANCE STUDIO, CHARD**  
- Monday: 7.30pm
- **AXMINSTER GUILDHALL**  
- Tuesday: 10.30am & Wednesday 6pm
- **AQUACENTRE, CREWKERNE**  
- Wednesday: from 10.30am
- **CHARD GUILDHALL**  
- Thursday: 10am & 6pm

[www.bellydanceheaven.co.uk](http://www.bellydanceheaven.co.uk) 07763 117519



- FENCING • DEMOLITIONS
- SITE CLEARANCE • GROUND WORKS
- EXTENSIONS • FOOTINGS
- TREE SURGERY
- DIGGER FOR HIRE • CONSTRUCTION
- PATIOS • DRIVEWAYS
- SWIMMING POOLS



[BESPOKELANDSCAPES@HOTMAIL.CO.UK](mailto:BESPOKELANDSCAPES@HOTMAIL.CO.UK)

**Mob. 07880 362227**

## ColourFence Fencing, built to last for at least 25 years!



ColourFence is becoming increasingly popular across the UK with homeowners fed up of losing their garden fences to winter storms and the hassle of replacing them. Equally, timber fences decay rapidly and require regular treatment with paint and chemical cleaners.

Unlike standard timber fences, ColourFence is designed to resist harsh weather conditions and will withstand wind gusts of up to 130mph! The weatherproof and durable ColourFence range has a number of core benefits that appeal to homeowners, it's guaranteed not to warp, crack, rot, peel or colour fade for the next 25 years.

When fencing maintenance costs are high, you want an option that is easy, low maintenance and cost-effective; and ColourFence is all those things and more, not least the 25-year guarantee. No painting, preserving, repairs or harsh cleaning chemicals, just an occasional hose down to keep it looking as good as new.

There's a choice of colours available, green, brown, cream and blue – to harmonise and enhance your garden's design. Choose a trellis in the same shade or contrasting colour.

Both sides of the panels are the same colour meaning both you and your neighbour have a stunning fence to look at year after year, helping you build good neighbourly relations.

The panels are 2.35 metres wide compared to 1.8 metres wide for standard timber panels (so you need fewer panels like for like) and can be cut on-site to custom fit your garden, whatever the size and the natural contours of your land. Our traditional metal garden gates are ideal for front gardens or driveways. With the ability to choose from simple drop bolts to key operated deadlocks we can guarantee the safety of your garden.

For further information and to arrange a free no obligation survey call 01823 792029 or visit [colourfencetaunton.co.uk](http://colourfencetaunton.co.uk)

# Homefire®

THE HEART OF YOUR HOME



## HOME DELIVERY

Or collect from your local Homefire Depot

Coal & Solid Fuel

Firewood

BBQ Gas & Charcoal

Compost

Follow us on Facebook

01246 385513

[www.homefire.co.uk](http://www.homefire.co.uk)

Homefire® Chard Depot,  
Beeching Close, Chard TA20 1BB



Safe, Secure & very, very strong....

## The ULTIMATE garden fence



Colourfence are transforming gardens across Somerset.

A garden fence built to last, with colourfence once it's up it stays' up, resisting wind gusts of up to 130mph!

Colourfence panels are made from innovative Colorbond Steel and are guaranteed to last at least 25 years, an occasional wash down with water will leave your fence looking beautiful year after year.

Available in a variety of heights and colours, with or without trellis.

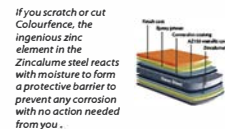
**A fence that requires no painting or treatment!**



The only fence that won't  
 ☒ warp ☒ crack ☒ shrink ☒ rot ☒ peel ☒ break ☒ blow over  
 ...well for 25 years, at least!

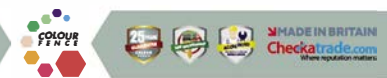


**The Fence that repairs itself.**



**STRONG, SECURE & BUILT TO LAST!**

For a free no-obligation site visit, please call Jordan or Courtney  
 tel: 01823 792029 | [colourfencetaunton.co.uk](http://colourfencetaunton.co.uk)



# Welcome to the Lyme Bay Winery Cellar Door



Visit us to discover our wide range of award-winning drinks, made here on site. We are passionate about producing delicious, English still and sparkling wine, Fruit wine, Mead, Cider, Gin, Rum and Liqueurs. Come and find out why the judges gave us a Specialist Retailer Gold Award, learn how we create our fabulous products and have a little taste of course!

Lyme Bay Winery, Shute, Axminster, Devon EX13 7PW what3words location //grapes.winemaker.gosh  
t: 01297551355 e: steve.richardson@lbwdrinks.co.uk [www.lymebaywinery.co.uk](http://www.lymebaywinery.co.uk)

Opening hours are Monday – Saturday 9:30 - 4:30. Closed for lunch 12:30 - 1:00. Sunday 11:00 - 3:00.



# Milkshakes & Fresh Milk



Daisy's Dairy, Yarcombe, EX14 9AX

8 milkshakes to choose from

Cheese - Butter - Eggs -  
500ml & 1L bottles

Follow us on Facebook &  
Instagram @daisysdairy21



# EGF CARPETS & VINYL

We are a family run Carpet, Vinyl, LVT,  
Sisal supply / fitting service with  
over 20 years experience

Telephone: 01460 68948  
Mobile: 07900 103918

Email: [seatrees@hotmail.co.uk](mailto:seatrees@hotmail.co.uk)  
FURNHAM CRESCENT | CHARD | SOMERSET | TA20 1AZ

## Nana's Attic

01404 891466 - 07923 973389  
Home of Quality Furniture & Decorative Pieces  
Open. 10am - 4pm Tuesday to Saturday

[www.nanasattic.co.uk](http://www.nanasattic.co.uk) - [contactnanasattic@gmail.com](mailto:contactnanasattic@gmail.com)  
18 Flightway Business Park, Dunkeswell EX14 4RD



## HONITON DEPOT

### OPENING HOURS:

Mon - Fri: 7.30am - 5pm  
Sat: 8am - 12pm

UNITS A,B,C & D, GLOUCESTER  
CRESCENT, HEATHPARK INDUSTRIAL  
ESTATE, HONITON, DEVON, EX14 1DB

TEL No. 01404 548981

[honiton@howdens.com](mailto:honiton@howdens.com)

[www.howdens.com](http://www.howdens.com)



We are a trade company, that has over 25 years of experience supplying the trade with **KITCHENS, FLOORING, DOORS, SLIDING WARDROBES, IRONMONGERY, STAIRS** & other Joinery Products. And all from local stock!

Call us to arrange a **FREE Kitchen Design Appointment**. Or, alternatively come in to see us. We are open to the public for browsing.

Don't know a reliable Trades Person, not to worry, we can help you to find one.

# GARAGE DOORS

QUALITY NEW GARAGE DOORS, REPAIRS AND AUTOMATION

**OUR SHOWROOM IS NOW OPEN!**

CALL PETE TODAY TO VISIT OUR BRAND NEW HONITON SHOWROOM  
AND VIEW THE SUPERB RANGE OF "GARADOR" DOORS IN ACTION



TRADITIONAL UP & OVER TO FULLY AUTOMATIC,  
INSULATED ROLLER AND SECTIONAL DOORS!

**FIRST LIGHT**  
HOME IMPROVEMENTS

UP TO  
40%  
OFF

ALL NEW DOORS, OPERATORS  
& ORDERS THROUGHOUT 2022!  
DISCOUNT APPLIES TO MANUFACTURER LIST PRICES

@FIRSTLIGHTGARAGEDOORS

[WWW.FIRSTLIGHTPM.CO.UK](http://WWW.FIRSTLIGHTPM.CO.UK)

01404 43238

07735 414746

HONITON'S PREMIER GARAGE DOOR SPECIALIST  
FIND US AT UNIT 2, 18 KING ST, HONITON EX14 1AF



**TILES & BATHROOMS THAT SUIT ALL**

Luxury Bathrooms - Finest Quality Tiles  
Extensive Showroom - Exceptional Advice



**FIND THE PERFECT HOT TUB**

Incredible Health Benefits  
Affordable Prices - Quality Products

Unit 1 Gloucester Place, Heathpark Industrial Estate, Honiton, Devon, EX14 1SJ



Steve and Andy Vatter who run Honiton Tiles and Bathrooms have a great deal to be proud of. Their fully fitted showroom on Heathpark, Honiton is a joy to behold, and those seeking the best range of tiles, showers, baths and accessories should visit soon. Steve has over 25 years experience specifying, supplying and installing tiles and bathrooms.

Steve's son Andy now heads up the showroom, with expert help from their team of advisors, designers and installers.

A recent addition to the portfolio of products are spas and hot tubs. The showroom for

these is in an adjoining unit, with fully working spas on display for customers to try. All projects are completely customer-led.

Firstly the team meet the client and establish their requirements. Much inspiration comes from the variety of displays in the showroom at Honiton Tiles and Bathrooms. Then a site visit by Steve, followed by a fairly intense session deciding the most appropriate layout and materials, and fittings. Then comes the presentation to the client, which may result in amendments and revisions. Hopefully the next stage is supply and installation, followed up by aftersales service and guidance.



**BLACKBURY  
HONEY  
FARM**



- Garden tea room
- Honey shop
- Gifts & treats
- Information & courses
- Christmas lunches

*Come and be  
part of this  
special place*

We are a dog-free site • Open 10am - 4pm Wednesday - Sunday  
Near to Blackbury Camp, EX24 6JF • [www.blackburyfarm.co.uk](http://www.blackburyfarm.co.uk) • 01404 871600

**Autumn/Winter Range Now in Stock**



**-THE COASTAL BOUTIQUE-**

61 High Street, Honiton, EX14 1PW  
[www.thecoastalboutique.com](http://www.thecoastalboutique.com)

**PLUMBING & HEATING**

**NO CALL OUT CHARGE**

- All aspects of plumbing & heating
- Boiler, Aga & Rayburn servicing
- Gas, Oil, LPG & Solid Fuel
- Bathroom installations
- Gas Landlord Safety Certificates
- Under floor heating
- Free estimates



*Southwoods Farm, Ashill, Cullompton,  
Devon EX15 3NS*

Tel: 01884 841130 | Mobile: 07860 441510

[www.njtplumbingandheating.co.uk](http://www.njtplumbingandheating.co.uk)



## LIONS MOLE SCREENING EVENT A GREAT SUCCESS

The "Mole Screening Day" organised by Honiton Lions on 21st May was so successful that it enabled the Lions to donate £600 to Hospiscare and the same amount to Cancer Research UK. Cheques for these sums were presented to Toni Hiscox of Hospiscare and Briony Gotch of Cancer Research UK outside the charity shop in Lace Walk on 27th July. The money was raised by charging those who were examined - by consultant dermatologist Dr Tony Downs - £5 each, and this was matched by the Lions.

Of the 113 individuals examined, 9 were referred for further checks and 5 with more serious conditions were advised to seek immediate medical treatment. A lady whose condition merited early medical attention sent Honiton Lions an email with the following message

*"I just wanted to say a very big thank you for arranging the mole screening which I attended. The doctor said I needed to have a fast-track appointment as I had malignant Melanoma. The operation was done, and I now know it was stage one, I am waiting for a second operation to remove more skin but will I not need any chemotherapy. Please carry on doing this on a regular basis, you might have saved my life"*



Lion Dave Rickard, Briony Gotch (CRUK),  
Lion President Brian Richards,  
Toni Hiscox (Hospiscare), Lion Tom Boucher.



A LIFESTYLE STORE CONTAINING  
LADIES FASHION, CHILDRENSWARE,  
TOYS, HOME INTERIORS AND GIFTS.



Some of our brands include

- Joma Jewellery • Katie Loxton • Plum & Ashby
- Bob & Blossom • Blade & Rose • Maileg

CALL US ON: 01404 613035  
139 HIGH STREET, EX14 1LW, HONITON

Fig & Ivy is a lifestyle store in the busy market town of Honiton. The shop first opened its doors in October 2020 - in the middle of the pandemic.

Owner Sarah has worked in retail for over 20 years, most recently as a homewares buyers, and is passionate about visual merchandising. Lockdown gave Sarah the push she needed to start her own business and Fig & Ivy was born!

Sarah is "driven" to create a unique one-stop shopping experience and is really passionate about sourcing brands from all over the world to give an alternative to chain store shopping. Each item is carefully selected to complement others throughout the store. Collections include ladies' fashion, childrens' wear, toys, home interiors and gifts.

Sarah will soon be launching her website so you will be able to buy online and your items can be delivered direct to your home or collected instore.

## C Plant Services Fenny Bridges, Honiton



WE SPECIALIZE IN HIRE OF PLANT  
MACHINERY, GARDENCARE  
& ACCESS MACHINERY.

- Cherry Pickers
- Crushers
- Dumpers
- Excavators
- Scissor Lifts
- Rollers
- Woodchippers and more.....



FOR MORE INFORMATION, PLEASE VISIT  
[WWW.CPLANTSERVICES.COM](http://WWW.CPLANTSERVICES.COM) OR  
CALL 01404 850357

## The Honiton Pottery Workshop

Birthday Parties  
Ceramic Painting  
Clay Workshop  
Throwing Tuiton  
Children's Parties  
Hen Parties  
Corporate Workshops  
Team Building Workshops  
Hand and Foot Prints  
Evening Classes  
and so much more!



T: 01404 42106

[thehonitonpotteryworkshop.co.uk](http://thehonitonpotteryworkshop.co.uk)  
[enquiries@thehonitonpotteryworkshop.co.uk](mailto:enquiries@thehonitonpotteryworkshop.co.uk)  
30 High Street, Honiton, Devon, EX14 1PU



4 you from me is a charming gift and coffee shop on Honiton's High Street.

This independent retail shop is nearly one year old and has a great selection of gifts, furnishing pieces and impulse buys.

Owners Simon and Alistair have long dreamed of opening their own gift and coffee shop, "We've loads of innovative and stylish gift ideas for all occasions for anybody young or old... whether you wish to say thank you, reward, impress, congratulate or entice! Select your gift, your card, the wrapping paper and leave it up to us to wrap while you enjoy a coffee and treat yourself to home made cake or a light lunch".

Every day "4 You From Me" are serving morning goods with amazing coffees, light lunches with homemade soup, followed by a selection of homemade cakes, sweet and savoury scones.

Open all day at 56, The High Street Honiton. (Next to Boots Opticians)



**4 You From Me**  
GIFTS, COFFEE & MORE

Unique gifts, homewares and coffee in Honiton, Devon



**TEL: 01404 43300**

[www.4youfromme.co.uk](http://www.4youfromme.co.uk) | [info@4youfromme.co.uk](mailto:info@4youfromme.co.uk)

**axcess<sup>®</sup> electric-bikes**

**Celebrating 10 Years of Electric Bike Sales in Honiton**

**ONLY £1445**

Colours: Grey, Red, Blue and Light Blue.

36V X 10Ah Battery,  
LCD Display,  
7 Gears,  
Disc Brakes



**ACCESS HUNTER 2**

**SPECIAL OFFER**

**£100 OFF**

Marked Price  
For Access Hunter 2  
With this coupon

**POWER TO GET YOU THERE... AND BRING YOU BACK**

Call us now on: **01404 41692** | Open 10.00am - 5.00pm Monday - Saturday

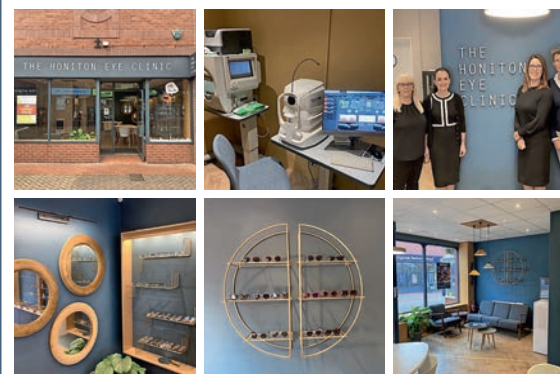
[enquiries@axcess-electric-bikes.co.uk](mailto:enquiries@axcess-electric-bikes.co.uk) | [www.axcess-electric-bikes.co.uk](http://www.axcess-electric-bikes.co.uk)

Unit 1, Devonshire Court, Devonshire Road, Heathpark Industrial Estate, Honiton EX14 1SB

The Honiton Eye Clinic

12 Lace Walk, Honiton Devon, EX14 1LR

**Tel. 01404 43044**



- The Honiton Eye Clinic is a locally owned independent practice. We are a small friendly team offering the latest technology, ensuring patients receive the highest standards of eye-care.
- **We do the scientific stuff!** A traditional examination of the back of the eye involved looking for signs of change or the surface, with our OCT scan we can see through the surface and examine all the layers of the retina. Being able to identify and monitor abnormality within these layers is essential for early detection and diagnosis of some of the major causes of visual impairment and blindness. Treatments can then be made available at the earliest possible moment.
- If you have any questions regarding your eye-care feel free to call or pop in to see us.
- We stock a wide range of innovative, niche and colourful spectacle brands alongside traditional styles.

Welcoming New and Existing Patients | Your Truly Independent Local Opticians

[honitoneyeclinik@gmail.com](mailto:honitoneyeclinik@gmail.com)

Mon – Fri 09:00 – 17:00

Sat – 09:00 – 13:00



A little over a month ago, on 8th September, the nation fell silent to the sad news of the death of Queen Elizabeth II. Having reigned for seventy years, over eight decades, not one of us ever seemed to think this event would ever happen. Being the longest reigning monarch of the United Kingdom and the second longest reigning ruler in the world; like the sun in the sky or water in the sea, we all unconsciously felt she would always be there!

With those still alive who can recall her Majesty's Coronation, themselves now in their own twilight years, the vast majority of us have never experienced such an event despite their having been over forty other Kings and Queens who have come and gone since 1066.

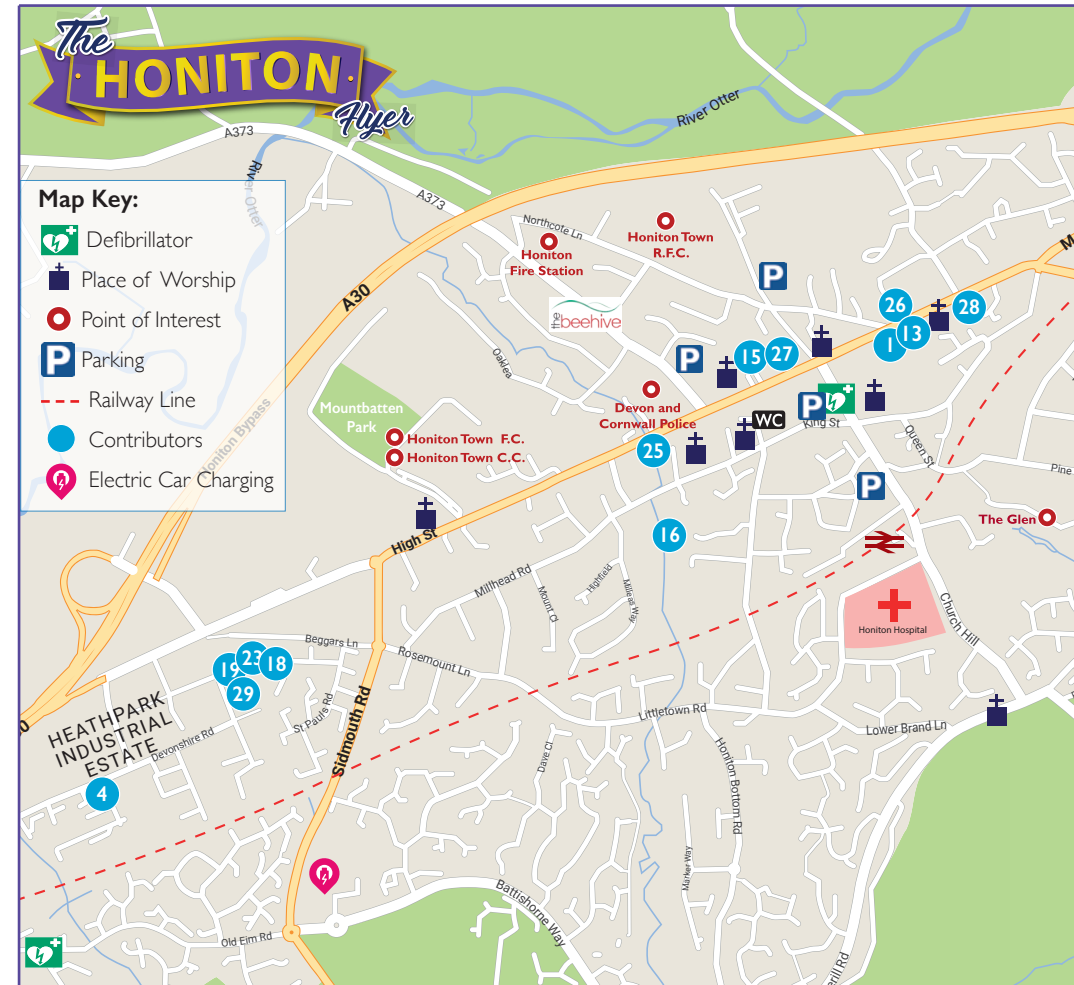
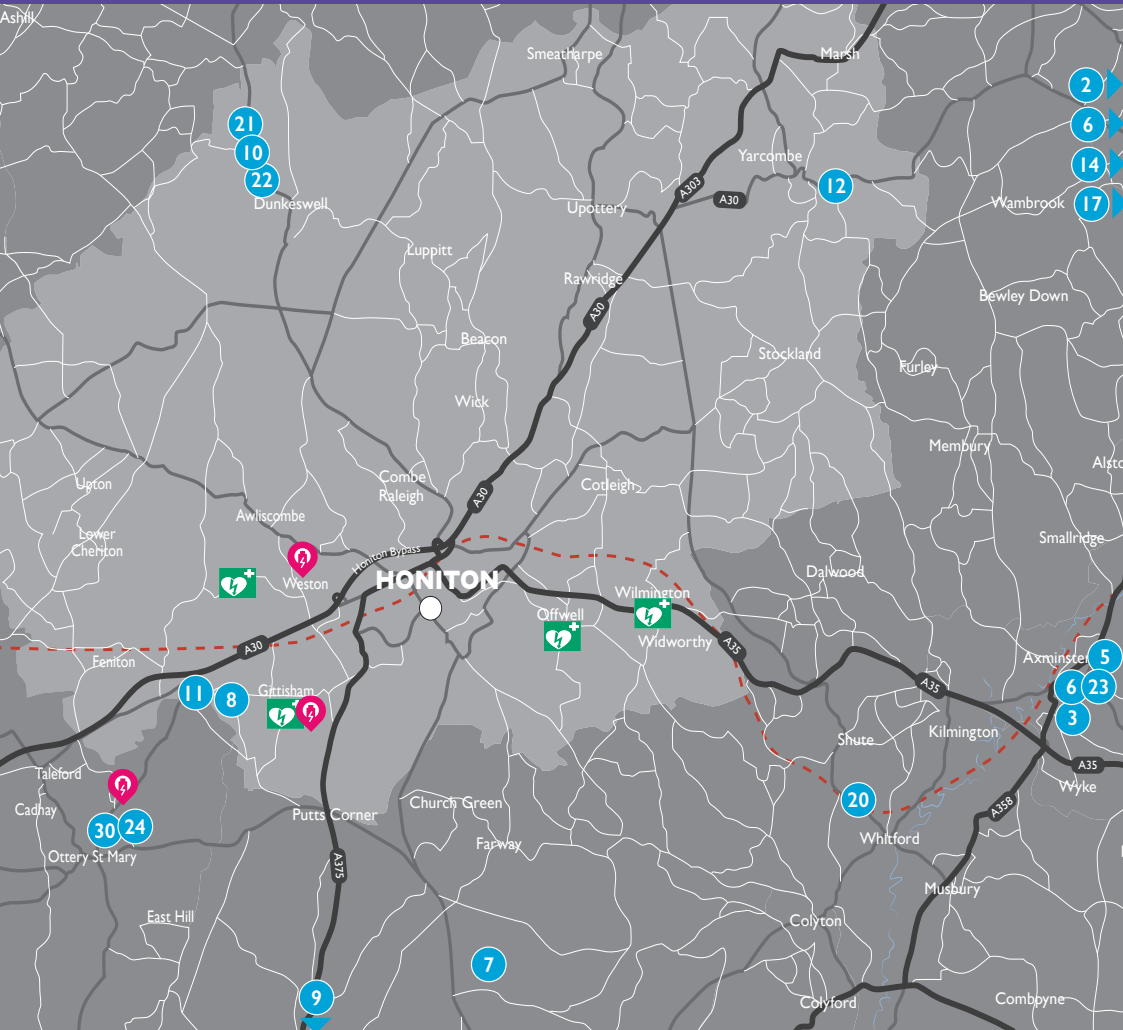
When the second longest reigning monarch of Britain died, after having herself been on the throne for over 63 years, Honiton did, as it has now, played its part in the national mourning of a beloved sovereign. Two days after Queen Victoria died, on 22nd January 1901, Honiton Borough Council met informally to draft a letter of condolence to the then King Edward VII. The Mayor had already instructed the Town Clerk to send a telegram to the new King at Osbourne House that read...

*"The Mayor and corporation desire to respectfully express their profound sorrow at the lamented death of their much beloved Queen and their deep sympathy with your majesty and other members of the Royal family on the melancholy event"*

Two days later on 26th January the proclamation of King Edward VII was read by the then Mayor, Robert H. Matthews, at the market place, just as it was by the town's present Mayor, Serena Sexton, at twelve noon, four days after the Queen's death, proclaiming King Charles III. On 2nd February 1901, at 1.30pm, a procession of the council, officers, Allhallows School representatives, Friendly Societies, firemen, police, Foresters, tradesmen and postmen attended a memorial service at St. Paul's Church where the Rev. Fortescue and R. A. Byrde led the service. The weekly market was rescheduled to the Friday (1st February) whilst all business was suspended on the Saturday. Eighteen months later on 9th August 1902 the country rejoiced as a new monarch Edward VII took to that great seat in Westminster Abbey for his Coronation just as we today will soon welcome our own new Sovereign King Charles III.



*Contributed by Terry Darrant*



1. 4 You From Me Ltd
2. Antiques Bazaar
3. Atkins Auctions
4. Axxess Electric Bikes
5. Axminster Garden Machinery
6. Belly Dance Heaven
7. Blackbury Honey Farm
8. C Plant Services
9. Coastline Mobility
10. Culm Valley Pet Cremations

11. Curt Willis Motors
12. Daisy's Dairy
13. Devon Permanent Makeup
14. EGF Carpets & Vinyls
15. Fig & Ivy
16. First Light Home Improvements
17. Homefire
18. Honiton Tile & Bathroom
19. Howdens
20. Lyme Bay Winery

21. MST Auctioneers
22. Nana's Attic
23. Oliver Joseph Fitness
24. Ottery Office & Computers Ltd
25. The Chippee !
26. The Coastal Boutique
27. The Honiton Eye Clinic
28. The Honiton Pottery
29. Total Plumbing Supplies Ltd
30. The Vintage Trading Post

## MOBILE SERVICES:

- Bespoke Landscapes
- Bluebird Care
- Colourfence
- Homeinstead
- Kode Print & Designs
- N.J.T. Plumbing & Heating
- South West Aerobatics
- Taylor Sweeps

# Honiton Women at Work



## SAMANTHA TUCK

Samantha Tuck works in the family business MG Webber West Country Grown, based in Honiton. They produce a vast range of seasonal bedding, patio and perennial plants for garden centres across the country.

Said Samantha – *“I love working in the family business because we are a small company that has made a big name for ourselves. We value each other greatly and produce quality products which are all British grown.”*



## ZOE HUGHES



Zoe Hughes runs “Thimblestitch” on Heathpark Industrial Estate, Honiton. This is a textile hub with workshops, plus fabrics and accessories for sale.

Said Zoe when The Honiton Flyer met her - *“I started Thimblestitch to give my students a great workspace, with materials for sale, and easy parking. I love seeing the smiles on the faces of my students at the end of a successful workshop.”*



## WANDA BUSSELL

Wanda Bussell has almost 40 years unbroken service at Honiton Street Market.

*“I started with my sister, selling Christmas trees. We were dropped off, and had to phone home when we sold out. Then it was fruit and veg. For the past 20 years it has been plants, all locally grown. And floral decorations for weddings and funerals. We still sell Christmas trees and holly wreaths in December.”*

Find Wanda in her usual spot outside Nat West Bank every Tuesday and Saturday.

Hillview Floristry, Beacon, near Honiton.

# ATKINS AUCTIONS

Old Style Values  
New Style Auctions

GAMBERLAKE AXMINSTER EX13 5JZ

OPEN 9 - 5 Monday - Friday

01297 631661

[www.atkinsauctions.co.uk](http://www.atkinsauctions.co.uk)

MONTHLY AUCTIONS OF  
ANTIQUES • COLLECTABLES • JEWELLERY  
ART • RETRO • ANYTHING OLD & INTERESTING

FULL OR PART HOUSE CLEARANCES  
17% COMMISSION Plus VAT



- NO MINIMUM CHARGE
- NO LOTTING CHARGE
- NO ADMIN CHARGE
- NO PAT TEST CHARGE
- NO INSURANCE CHARGE

TRUST • TRANSPARENCY • TREASURES

Devon Permanent Makeup by Vanessa Kirk is a unique High Street salon offering a variety of traditional and advanced treatments on an exclusive one to one basis, ensuring clients get the optimum treatment experience.

Vanessa has over 12 years experience within the beauty industry, qualified to level 3 in Beauty Therapy. Vanessa now specialises in Permanent Makeup and Skincare having trained to an advanced level in results driven skincare and carried out Permanent Makeup training with a multi-award winning industry expert.

Vanessa uses only the highest quality professional products ensuring great results using the latest advanced technology.

Gift vouchers are also available.



*Vk*  
DEVON PERMANENT MAKEUP  
BY VANESSA KIRK

- Beauty Treatments
- Customisable Facials
- Permanent Makeup
- in clinic Aesthetics treatments

42A HIGH STREET, HONITON, EX14 1PJ

**07766523715**  
www.devonpermanentmakeup.co.uk  
vanessa@devonpermanentmakeup.co.uk

You can also contact Vanessa via Facebook and Instagram at Devon Permanent Makeup

**kode**  
PRINT & DESIGNS

**WEBSITES & PRINTING**

BUSINESS CARDS, POSTERS, LEAFLETS, INVITES, CALENDARS, BROCHURES ETC..

LOCATED IN AXMINSTER

Your local one stop solution for all printing & digital needs

sales@kodedesigns.com  
www.kodedesigns.com

**OTTERY OFFICE & COMPUTER LTD**  
www.otterycomputers.co.uk  
OFFICE SUPPLIES - COMPUTER - MEDIA SERVICES  
28 Mill Street, Ottery St Mary

Large Format Print, Copy, Scan - up to A0  
(Plan copies, Posters - Full Colour)  
PC/Laptop Repairs, Paper & Ink Cartridges and more..  
**PHONE: 01404 814946**

**TAYLOR SWEEPS**

- All types of chimneys and flues swept
- OFTEC registered stove installer
- Certificates issued
- Creosote removal treatment service
- Maintenance/Service work completed
- CCTV inspections
- Bird nests removed & crows fitted

**TELEPHONE: 07814 594 421**  
taylorsweeps.co.uk achimneysweep@mail.com

**escape bathrooms** SHOWROOM



let us **inspire** & **transform** your home

Our service includes:

- ✓ Free Home Visit & Measure
- ✓ Showroom Consultations
- ✓ CAD Designs
- ✓ Free Delivery

Contact us today to book your free, no-obligation home measure, design and quote

**TOTAL**  
Plumbing Supplies Ltd

Your local plumbers merchant

- ✓ Friendly knowledgeable staff
- ✓ Everything from tap spares to full heating systems
- ✓ Trade accounts for businesses

01404 540280

Units 2, 3, 4 Gloucester Crescent, Heathpark Industrial Estate, Honiton, EX14 5DB

escapebathrooms.com | totalplumbing.co.uk



## **WALK AROUND FENNY BRIDGES, CADHAY, ESCOT AND FENITON.**

We started from the "old" A30 at Fenny Bridges. Drive past The Greyhound Inn, about half a mile to Ye Ash Farm. Parking here is easy on the road. Go under the road bridge on the north side, bear left and emerge onto a farm lane. Go straight ahead into a cleared path beside the "new" A30. There is road noise on the right, but also heavy undergrowth to conceal the sight of the road. Soon the path bears left and passes under 2 bridges. The second bridge was constructed for road traffic to pass over the original Feniton to Ottery railway line. Now follow that line through an open field, and into a covered track. This is the old railway "permanent way" and soon becomes a tree-covered embankment. Beware – along here are potholes, sink holes and badger setts under foot. The path emerges from the trees onto open farmland on the right, and the River Otter on the left. You soon reach a stile on the left, pass into this field with grand views of Gosford road bridge. At the road, turn left, over the bridge, then almost immediately right into another field. Admire the weirs in the river here. Then follow the path uphill to the left. This continues for about 1 mile

along the side of an embankment, with frequent glimpses of the River Otter to the right. There are some steep slopes with steps, and some lovely woodland glades, all under the boughs of impressive beech trees. Much of this section is "sideling" – a good Devon term for a side-slope.

Soon the route drops to a weir and a mill leat. Cross the leat on an old bridge with open mill hatches, and then turn left on a level path beside the leat.

At Cadhay Bridge Farm, turn right along the narrow lane, and over another bridge. Ahead is Cadhay House, worthy of a detour. However, the path we want is on the right about 200 yards before the driveway to Cadhay House. Take this across meadows, and climb a wooden footbridge shared with sheep. Then bear left towards the hamlet. Once on the lane, turn right and climb the slope to Taleford, then left along another lane back to the "old" A30. We then turned right and soon entered a farm track on the left, leading right up to the edge of the new A30, before sweeping downhill, leftwards to Escot Church. Another worthwhile detour, if only to admire the immaculate churchyard.



*This is very near the spot where environmentalist "Swampy" (Daniel Hooper) spent a week in 1996 buried in a tunnel in order to try to prevent the construction of the new A30.*

We re-joined the track, and crossed under the new A30 dual carriageway, before climbing right-handed to the first entrance into Escot Estate, on the left. This carefully managed estate is open to the public for leisure and pleasure walking. Please obey the signs and instructions. We walked straight ahead with a beautiful stand of beech trees on the left, before emerging into parkland. Then at the next copse we turned right up a track, before going into woodland straight ahead. There are great glimpses here through the trees to the right, over Ottery St Mary to Gittisham Hill. At the end of the woodland, turn left into Black Aller Covert, before joining a new concrete road. Turn right here and follow the road down

to a thatched lodge. Turn left along the lane towards Feniton. The traffic here can be very busy, but thankfully subject to a 30mph speed limit. At the sharp left turn, keep straight ahead into Green Lane. Soon we found a footpath on the right, which led past apple orchards, downhill back towards Fenny Bridges. Interestingly this too is broadly the route of the old railway line from Feniton to Ottery.

Soon we crossed the A30 dual carriageway, before turning left and under the bridge to our car on the former A30.

**DISTANCE.** 5 miles. (*5.5 if you take in Cadhay House*)  
**DURATION.** 2 hours 30 minutes. 3 hours if you take in Cadhay House and Escot Church.  
**MAP.** Ordnance Survey Explorer 115.  
**DIFFICULTY.** Moderate.  
**DOGS.** Always on leads.

**Date of walk. September 2022.**



**Weir at Gosford road bridge.**



**Cadhay House**



**ESCOT-CHURCH**



**Views to Gittisham Hill**



**Orchards at Feniton**



EAST DEVONS  
FAVOURITE, FRIENDLY,  
COMMUNITY GYMS

# OLIVER JOSEPH FITNESS

MEMBERSHIPS  
FROM

**£25 PM**

For more information:  
[www.oliverjoseph.co.uk](http://www.oliverjoseph.co.uk)  
[accounts@oliverjoseph.co.uk](mailto:accounts@oliverjoseph.co.uk)



# OLIVER JOSEPH FITNESS

EAST DEVONS  
FAVOURITE GYMS

For more information:  
[www.oliverjoseph.co.uk](http://www.oliverjoseph.co.uk)  
[accounts@oliverjoseph.co.uk](mailto:accounts@oliverjoseph.co.uk)

## MEMBERSHIPS

We offer memberships from as little as £25pm; including student, off-peak and joint deals.

## FEATURES

- ✓ 24/7 access
- ✓ Degree qualified Personal Trainers
- ✓ Unique equipment
- ✓ Group exercise classes
- ✓ Workout Programmes

[accounts@oliverjoseph.co.uk](mailto:accounts@oliverjoseph.co.uk)

[www.oliverjoseph.co.uk](http://www.oliverjoseph.co.uk)



A trusted family business with over 35 years' experience



info@coastlinemobility.com

www.coastlinemobility.com



AMAZING PRICES IN STORE!

Buy with confidence from the business that cares

LARGEST RANGE OF MOBILITY AIDS IN EAST DEVON!

Low prices with rise and recliner chairs starting at £750



**SIDMOUTH**

75 High Street  
EX10 8LD  
Tel: 01395 487 260

**COLATON RALEIGH**

Unit 10, The Old Sawmills,  
Hawkerland Road, EX10 0HP.  
Tel: 01395 487 171

**EXMOUTH**

14 Rolle Street  
EX8 1NJ  
Tel: 01395 487 172

**NEW SHOP OPENING!**

Coastline Mobility is a trusted, friendly, family run business which has over 30 years of industry experience. With stores in Exmouth and Sidmouth high street they have now opened their largest shop in Colaton Raleigh. The Colaton Raleigh branch stocks a wide range of products from both new to second hand, with plenty of FREE designated parking on site, it is open Monday to Friday, while Sidmouth and Exmouth remain open six days a week. Offering products ranging from Scooters, R+R Chairs, Powerchairs, (Electric) Beds, Rollators, Wheelchairs, Stairlifts, Small aids and even Bathrooms!

Being a family business we appreciate that our customers come to us with a need and not a want, our ethos is that if we haven't got it and we can't get it we will not mis sell you a product that is not right or fit for purpose. We pride ourselves on the fact that we are all fully trained to know all about the products that we supply and sell, due to our buying power we keep our costs as near to online prices as we can while offering a caring, considerate, peace of mind service. As we would like our customers to know we really are there for them.



If you need assistance with any aspect of your mobility please visit our website - [www.coastlinemobility.com](http://www.coastlinemobility.com) or visit any of our stores, see below for contact details.  
**Exmouth - 01395 487172 Colaton Raleigh - 01395 487171 Sidmouth - 01395 487260**



Hangar 1, Marcus Road  
Dunkeswell, EX14 4LB  
Tel: 01404 891833  
email: info@mstauctioneers.co.uk  
Website: www.mstauctioneers.co.uk



easyLive Auction.com

**MONTHLY AUCTIONS**

of  
Antiques, Collectibles, China & Memorabilia  
Mid Century, Retro & Vintage Furniture  
Commercial & Domestic Catering Equipment  
Office Furniture & Equipment, PCs & Printers  
Plant, Machinery & Engineering Equipment  
Woodworking Equipment & Timber  
Commercial Vehicles & Probate Vehicles  
Classic Cars & Boats  
Insolvency & High Court Enforcement Sales



VW Beetle 1973 £9,680



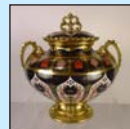
MF 35 1964 £4,200



Navara Tekna 2017 £14,600



Discovery 2017 £31,500



Crown Derby £860



Steinway Grand £6,600



Moorcroft Vases £950



Hardy Motor Boat £10,400



Vanden Plas 1963 £35,500

Asset Valuations On Site Auctions Probate Valuations Insolvency Sales



REPAIRS, SERVICING, MAINTENANCE, MOTS  
**CALL US ON: 01404 851551**



Book Your  
MOT Test with  
Us Today



**Hours of Operation**  
Mon - Fri: 8:30am - 5:30pm  
Sat: 9:00am - 1:00pm  
Sunday: Closed



- Tyre Fitting
- Exhausts
- Brakes
- Cambelts
- Clutches
- Auto Air Conditioning
- Diagnostics
- Minor Repairs

**YOUR LOCAL FRIENDLY GARAGE**

Serving Honiton, Ottery St Mary, and the East Devon Area

Put our 20-plus years of experience to work for you by calling our shop today.

[www.curtwillismotors.com](http://www.curtwillismotors.com) - Fenny Bridges Honiton, Devon, EX14 3BG

**The Friends of Honiton Station** is a group of volunteers, formed five years ago, who support our local railway. We are a Station Adoption Group recognised by South Western Railway. We carry out projects to enhance the station environment, help to create display material and artwork, try to make Honiton Station a focus for the local community, and promote rail travel from Honiton to local people.

Our ambition is that the station should be firmly at the heart of the town and everything that it does, including supporting Honiton as a health-promoting town.

This summer, members of The Friends of Honiton Station welcomed judges from the Stations In Bloom competition on a visit to celebrate the work being done to enhance the station.

The visit coincided with the launch of an exciting partnership between The Friends of Honiton Station and a number of Honiton-based community groups. Each group has produced a piece of original art work on the front of one of the planters on the station, with a small plaque next to it telling visitors about the work each group does to support the community.

The groups taking part in the new project are: Honiton Health Matters, Honiton Carers, #BroCheck, Parental Minds, Honiton Scouts, Honiton Carnival Club, The Beehive, and Open Arms East Devon. The project is also supported by the Thelma Hulbert Gallery.

Volunteers from each group will be caring for their planters, keeping the plants watered, doing some weeding and adding new plants when the planters need refreshing.

The Stations in Bloom judges also visited the station waiting room, which has recently been refurbished by South Western Railway, and viewed a display on the history of the station. The judges were given copies of a booklet that accompanies the display. Copies of the booklet are available free from the waiting room. They also saw the community display board in the station car park, which gives local groups the opportunity to advertise their events to passengers.

For more information about The Friends of Honiton Station, and to read our monthly newsletter, go to: [friendsofhonitonstation.org.uk](http://friendsofhonitonstation.org.uk)

Martin Long (Chairman)

Photograph: Planter adopted by Honiton Health Matters



## As Devon starts to quieten, find a job for *all seasons*...

The role of **Care Professional** with **Home Instead** can offer you:

- Local Working
- Adaptable Hours
- Excellent Rates of Pay
- Paid Travel and Mileage
- Full, Award Winning Training
- Personalised Career Pathways
- Ongoing Support Programmes

**Work for a 5 Star Employer.**  
Provide an officially Outstanding Service.

Visit our website to find out more or  
**Contact us on 01395 200600**  
[homeinstead.co.uk/eastdevon](http://homeinstead.co.uk/eastdevon)





## WORDSEARCH

### AUTUMN THEME

- Autumn
- Amber
- Orange
- Leaves
- Harvest
- Brown
- Cozy
- Conkers
- Halloween
- Pumpkin
- Walks
- September
- October
- November

AUMTNPKBQQELGRIPSCLM  
 UAWZOVVAZLYFDWNSXDK  
 TNVYVLRPDWRFNSATCKCF  
 UIWSEYPKAYJMARLOPXOQ  
 MWOCMEARAANKMAEKLIYVA  
 NWYOBJIZPQGLAJSIOTGL  
 IKAZEMXQUQHVSAMBERRC  
 KBGYRCOVTBZDKDYGVMS  
 YHSEPTEMBERZTPBJRSNY  
 JAYOXIUUVXLGLKJJWTIOL  
 PRJOROKJRHALLOWEENDT  
 IVJGQACZFFVVPUMPKINYC  
 JERSDBNTWZLFUQEOPCPW  
 BSZICRGGOFJWBHJHFUT  
 ZTBHWOECEBCPHTFSUJFD  
 WURUSMNHUCEWDIVCUMQF  
 TWOLCOWKBHCRBPAYSJDS  
 XWWOIEJCEYHILEAVESHQ  
 QYNQHLZHIRQQABOERBTW  
 TKAICRPHISEBZEVHTGZ

### DO YOU LIKE WHAT YOU SEE HERE IN The Honiton Flyer?

Would you like to be part of our next edition for Winter 2022? We print 11,500 copies every quarter. Most of these are delivered by Royal Mail to every business and private address in EX14 postcode. That is around 10,300 addresses! With Royal Mail we cover Honiton Town, Feniton, Awliscombe, Dunkeswell, Smeatharpe, Upottery, Yarcombe, Stockland, Cotleigh, Wilmington and Offwell. Additional copies are available from our advertisers, plus focal points in and around Honiton, including Tesco shop and forecourt, Wetherspoons, Allhallows Museum, Combe Farm Shop, Highfield Fish Plaice, The Hare & Hounds. We are serious about distribution!

**WINTER 2022 Edition out 19 December.**

**BOOKING DEADLINE 18 November.**

Our adverts start from £48, and we have some cracking deals for larger adverts, advertorials, features and block-bookings!

Please contact our Field Sales Manager Andy Munckton on 07823 346666

or email [theflyerpublications@gmail.com](mailto:theflyerpublications@gmail.com).

**WE WANT YOUR BUSINESS TO SUCCEED!**

### WORDSEARCH ANSWERS:

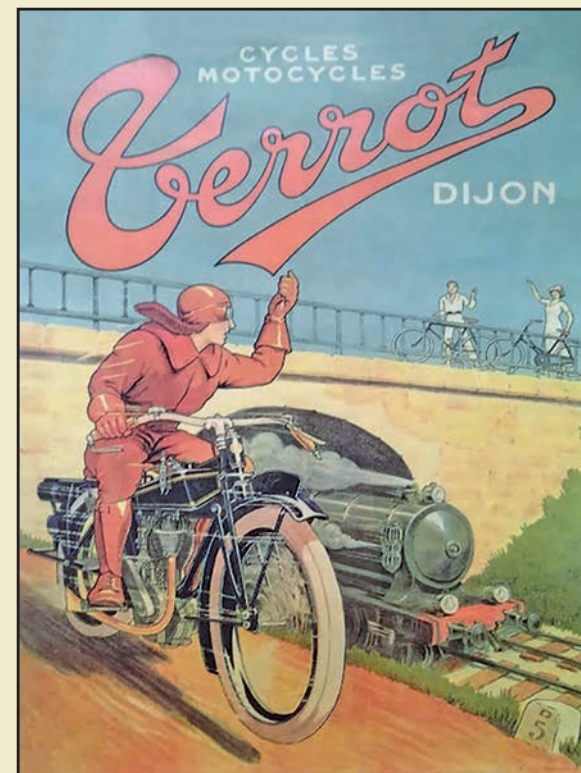
TKAICRPHISEBZEVHTGZ  
 MWOCMEARAANKMAEKLIYVA  
 UAWZOVVAZLYFDWNSXDK  
 TNVYVLRPDWRFNSATCKCF  
 UIWSEYPKAYJMARLOPXOQ  
 MWOCMEARAANKMAEKLIYVA  
 NWYOBJIZPQGLAJSIOTGL  
 IKAZEMXQUQHVSAMBERRC  
 KBGYRCOVTBZDKDYGVMS  
 YHSEPTEMBERZTPBJRSNY  
 JAYOXIUUVXLGLKJJWTIOL  
 PRJOROKJRHALLOWEENDT  
 IVJGQACZFFVVPUMPKINYC  
 JERSDBNTWZLFUQEOPCPW  
 BSZICRGGOFJWBHJHFUT  
 ZTBHWOECEBCPHTFSUJFD  
 WURUSMNHUCEWDIVCUMQF  
 TWOLCOWKBHCRBPAYSJDS  
 XWWOIEJCEYHILEAVESHQ  
 QYNQHLZHIRQQABOERBTW  
 TKAICRPHISEBZEVHTGZ



# Antiques Bazaar

A Great Centre for Antiques and Collectables

**TRADING 7 DAYS A WEEK**

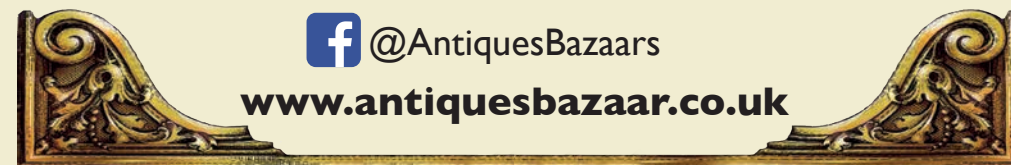


The Old Textile Mill, South Street,  
 Crewkerne. TA18 8AG

**Tel: 01460 77121**

@AntiquesBazaars

[www.antiquesbazaar.co.uk](http://www.antiquesbazaar.co.uk)



REST IN PEACE  
**YOUR MAJESTY**

1926 - 2022



Let our family take  
care of yours  
in your time of loss.

**Culm Valley**  
PET CREMATION



Individual pet cremations, same day collection  
Units 1 & 2 Block A, Flightway Business Park,  
Dunkeswell, EX14 4PE

TEL: 07483 315945 or 01404 891891

[www.culmvalleypetcrem.co.uk](http://www.culmvalleypetcrem.co.uk)



# We want you!

We are recruiting Care Assistants in Honiton, Seaton, Axminster, and all over East Devon. Part-time, Full-time, flexible, and live-in roles available.

Make a smart move into your new career today, join an outstanding team, and **work with the best.**



**Call us now on: 01404 814880**  
or email: [eastdevon@bluebirdcare.co.uk](mailto:eastdevon@bluebirdcare.co.uk)

Inspected and rated

Outstanding ☆

